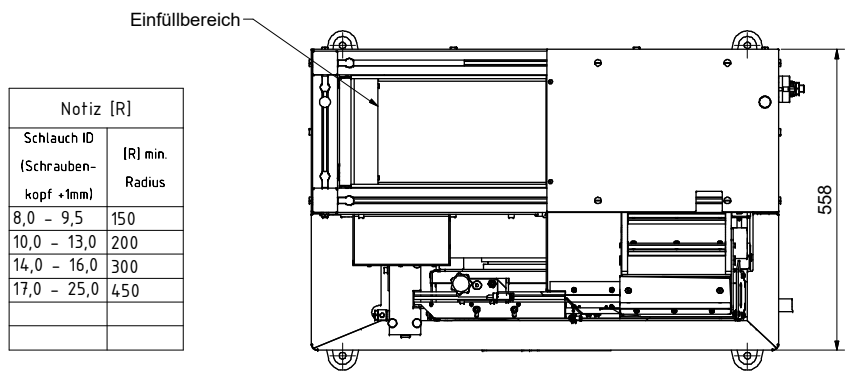
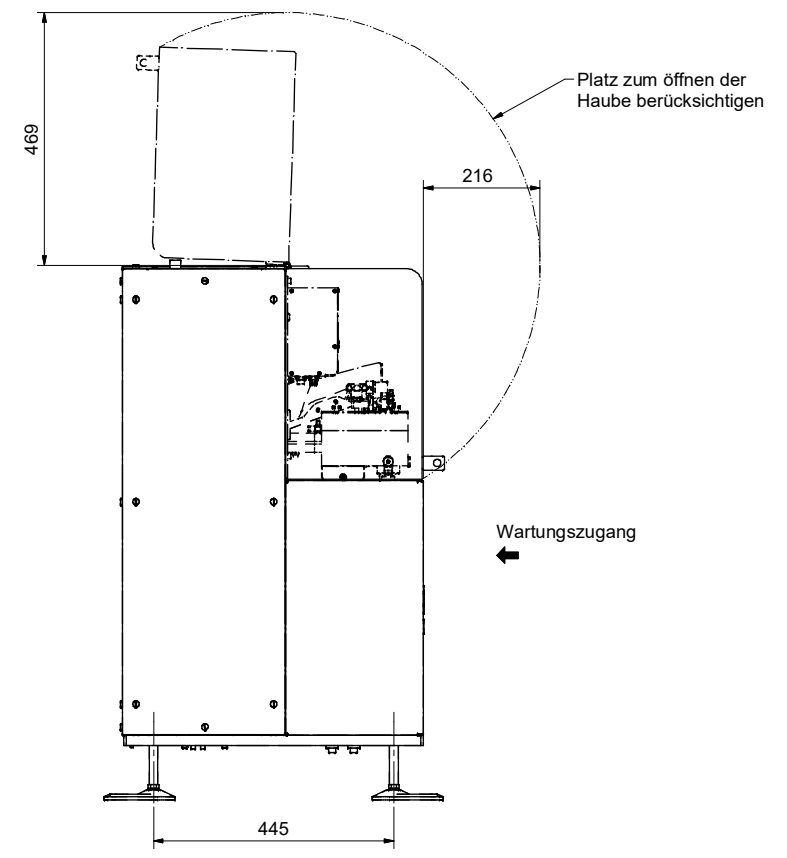
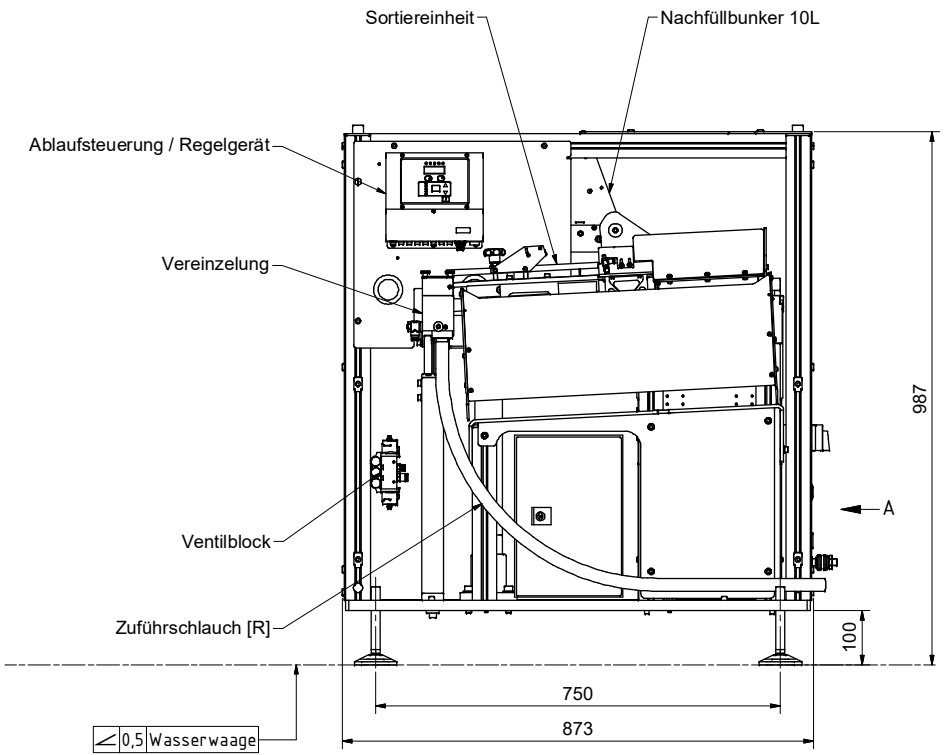
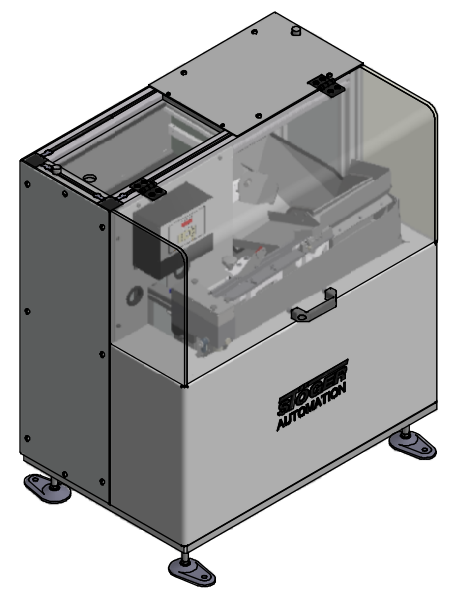
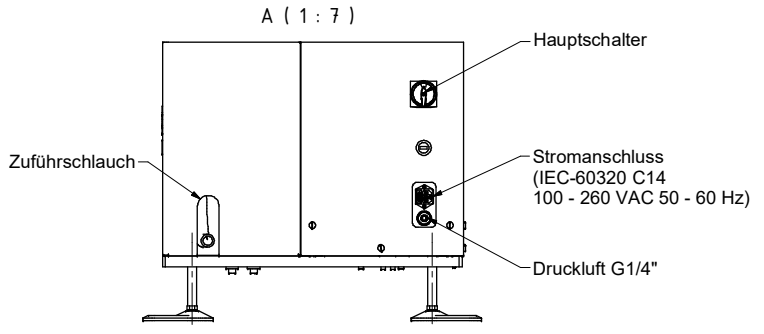


STF9020

creation date: 27.05.2020
5814.16



Notiz [R]	
Schlauch ID (Schraubenkopf +1mm)	[R] min. Radius
8,0 - 9,5	150
10,0 - 13,0	200
14,0 - 16,0	300
17,0 - 25,0	450



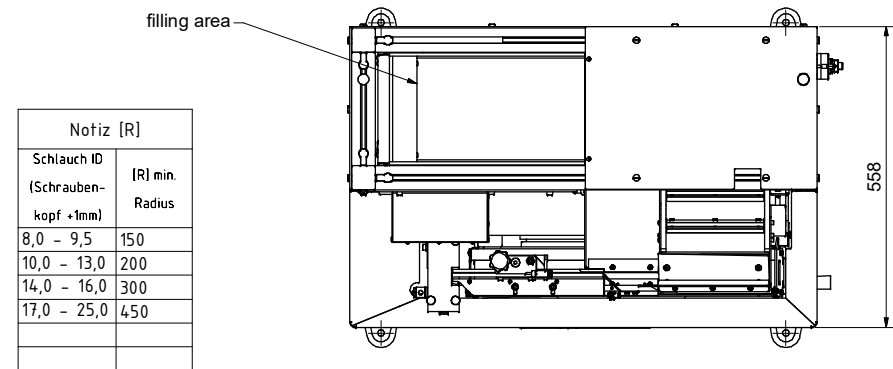
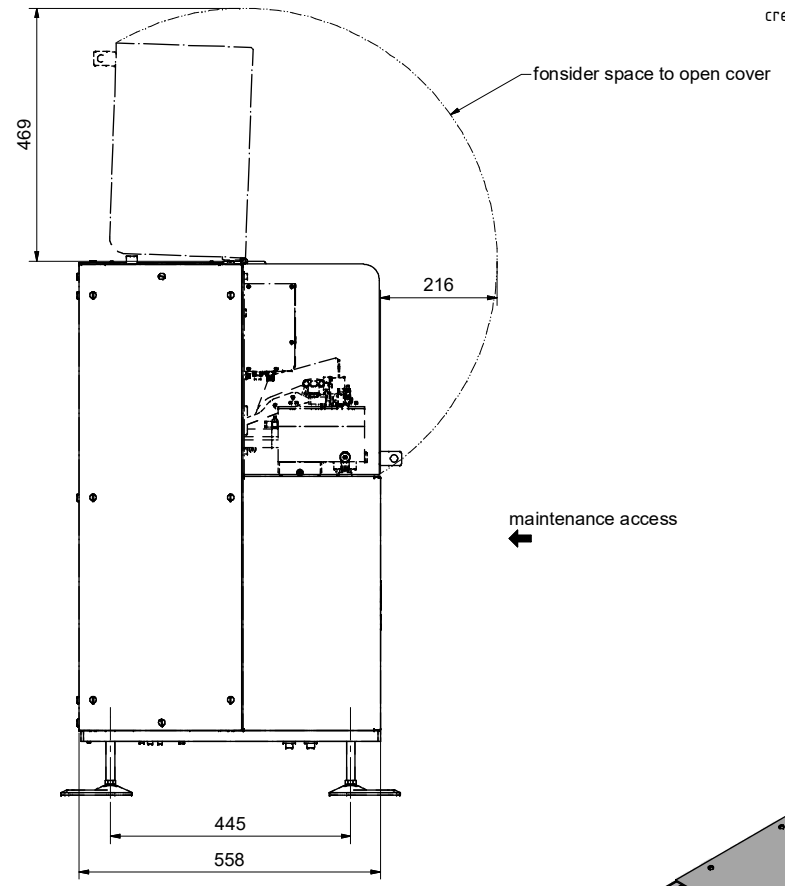
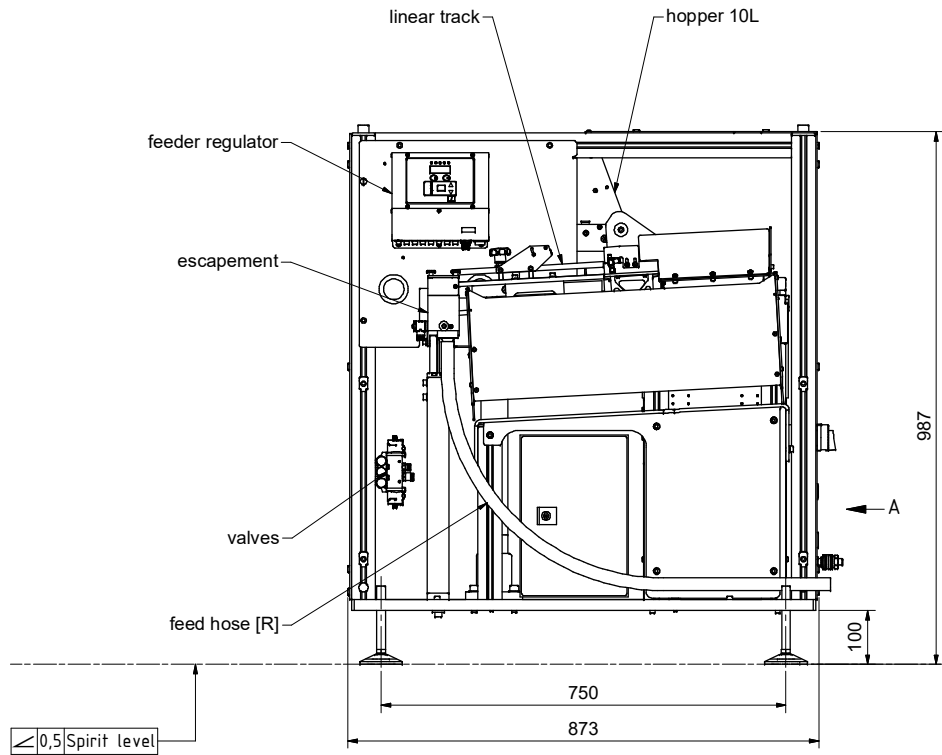
Die Firma STÖGER AUTOMATION weist darauf hin, dass das abgebildete Modell nur beispielhaft ist und je nach Anwendungsfall in Form und Abmessungen abweichen kann.

Gewicht: ca. 157,0 kg Luftverbrauch ca. 30 Liter je Zyklus. Füllvolumen 12 Liter

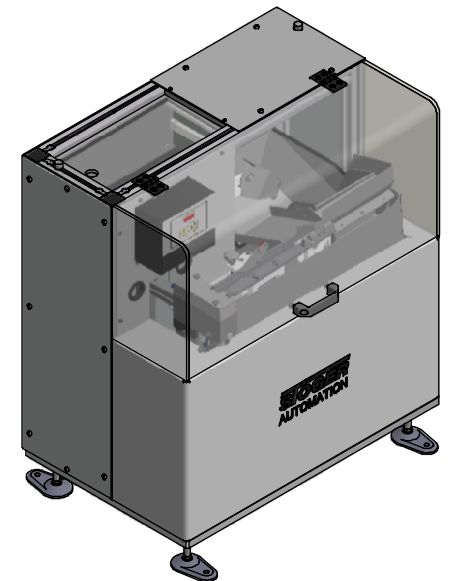
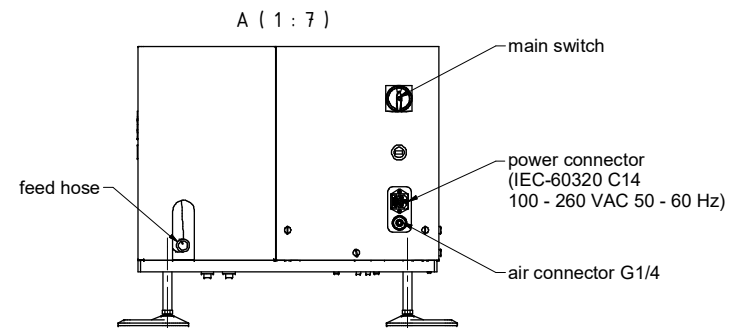
www.stoeger.com

STF9020

creation date: 27.05.2020
5814.16



Notiz [R]	
Schlauch ID (Schraubens- kopf +1mm)	[R] min. Radius
8,0 - 9,5	150
10,0 - 13,0	200
14,0 - 16,0	300
17,0 - 25,0	450



This illustration serves as an example only in shape and size depending on the individual application.

Weight: 157,0 kg. Air consumption approx. 30 liter per cycle. Filling volume 12 liter

www.stoeger.com